

# Inspire

Wide seeding precision

**VÄDERSTAD**





# Where farming starts

60 years of facing agronomic challenges together with farmers all over the world makes us young in the business. But that has never stopped us from pushing the boundaries of agriculture - and it never will.

Finding new ways forward in an everchanging business, coming up with new innovations and presenting new solutions that simplify work and improve results for farmers is in our DNA.

That is what Väderstad always has done, and always will do.  
Finding new solutions for a better tomorrow.







# Capacity and precision

The pneumatic seed drill Inspire offers a high-capacity output at a low draught force requirement. Its adaptive double disc seed coulters system, paired with the highly advanced Fenix III metering system, results in an even emergence and strong crop growth.









# Exact seed placement and a perfect emergence



## High capacity - excellent results

Every component of Inspire is designed to deliver great seeding results at high working speed. The large seed hopper, high capacity metering system as well as the generous diameter of the seed coulters are all examples of this. You benefit from a high seeding capacity, making it possible to cover more ground in shorter time.

## Designed for performance

Inspire is built as a heavy-duty machine with a compact design. Its strong construction adds durability and ensures great results during a long working life. The compact design enhances the manoeuvrability and its ability to keep the precision in uneven field conditions.

## 125mm row spacing for maximum yield

1

### Competitiveness

A narrow row spacing provides the crop with considerably higher competitiveness against weeds. This is especially important as more herbicide resistant weeds are on the increase. Research show that 125mm row spacing result in 20% less weeds than 150mm.

2

### Population distribution

125mm row spacing gives a better population distribution, allowing for a larger spacing between the seeds in the row. The fungi pressure is also reduced.



### Contour following for even results

The great field contour following ability of Inspire is a result of its highly adaptable wing sections following the ground, as well as individual suspended seed coulters. This makes Inspire able to provide same even conditions over the entire field.

### Maximising the yield potential

The compact design of Inspire minimizes the tractor size needed for pulling. This leads to a lower soil compaction, allowing for a more even and stronger root and plant development.

3

### Canopy closure

Since narrow rows close faster, the evaporation is reduced at a time when the access to moisture is most crucial.





# Adapts to the field

The heart of Inspire is its responsive seed couler system. It has an excellent ability to adapt to any irregularities on the field, thereby keeping the seeding depth constant at all times. The result is an impressive seed placement and an even emergence over the entire field.









# Designed for consistent seeding depth

The Inspire seed coulters consist of double seed discs connected to a large depth keeping press wheel. Each seed coulters is individually mounted on a rubber suspended arm, and the seeding depth is set by applying hydraulic pressure. This system allows for excellent contour following with great results at high working speed.



## TriForce for excellent contouring

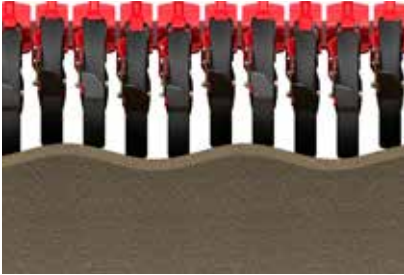
The three bar rubber suspension TriForce is Väderstad's unique coulters suspension. TriForce doubles the coulters' contour movement compared to a conventional four bar rubber suspension. This gives perfect seed placement on uneven ground, such as wheel tracks or undulating fields.





# Seeding depth as its top priority

A seed planted at the correct depth will emerge at the right time and get a competitive edge against both pests and weeds. Knowing this, every part of the Inspire seed couler is constructed with precision in mind.



## Uneven ground

Having each seed couler mounted on its own arm allows the seed coulers to respond to any irregularities on the field. The working depth is constantly maintained over the entire working width.



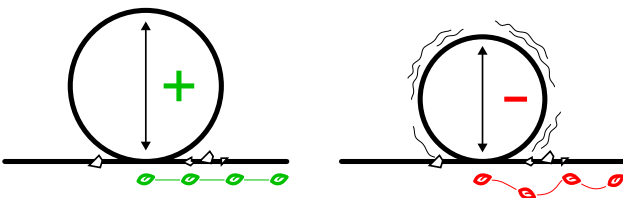
## Varying soil types

To adapt to varying soil conditions, the couler pressure can be altered from the cab on the move. The result is a consistent seed depth over the entire field, despite variations in soil types. The wide press wheel has a great ability to stay on top of the field surface, reducing the need to adapt pressure.



## Hilly terrain

To ensure an even seed depth in hilly terrain, Inspire is equipped with active seed couler pressure. The machine immediately registers if it is located on a crest or a trough. If so, automatic valves directly compensate for an increased or decreased pressure. The seed couler pressure is kept at a constant pre-set value, irrespective of which working angle the seed coulers are in, relative to the rest of the machine.



## Size minimises vibrations

The generous diameter of the seed discs and couler press wheel results in a smooth ride with minimal impacts from vibrations, further increasing pressure.



## Versatile press wheel

The width of the couler press wheel enhances its ability to stay on top of the field surface, irrespective of soil condition. The soft tyre profile widens the contact surface to the soil, further increasing the spectra of usage and ability to close the seed slot.



# Impressive seed placement

A perfect seed placement is all about details.  
By leaving nothing to chance, Inspire ensures that  
each seed is granted great conditions for growth.  
This maximises the potential of each seed.







# Seeding precision in depth

The Inspire seed coulters set a great focus on details impacting on seeding precision. The heart of the seed coulters is the seed discs and press wheel working together for best results.



## OffSet seed discs

The Inspire seed discs are mounted in an OffSet position. This reduces the draught force required for opening the seed slot. Due to the OffSet mounting, the seed discs keep their position over time, maximising precision while reducing maintenance.

## Precise seed delivery

The seeds are released in front of the seed discs centre. The rotation of the seed disc helps place the seed in the bottom of the seed slot, enabling immediate access to moisture. This system does not require a seed firmer, reducing wearing part costs.

## Swedish quality

The Inspire seed discs are built from special hardened V-55 Swedish steel. This carefully selected raw material delivers a robust construction, excellent performance and extremely long working life in the field.

All Väderstad discs come with a lifetime warranty. If a disc should fail during its lifetime, Väderstad will replace it at no cost.





## Seed disc shape matters



### Great depth keeping

The sharp attack angle of the seed discs reduce the pressure needed to create the seed slot at desired depth. The depth keeping ability of the seed drill is multiplied as a result.



### Narrow seed slot

The disc shape in combination with OffSet creates a narrow seed slot with minimal disruption to the soil. This improves the seed distribution in the row, as well as making it easier to shut the seed slot.



### Higher throughflow

Inspire has a narrow seed coulter due to the seed disc design. This allows more material to pass through the machine, improving performance while drilling in crop residues.

## Clean wheel keeps seed depth

The tyre in combination with rear mounted scrapers keep the wheel clean. This prevents soil from sticking to the wheel which could alter the seed depth.





# Full control. Always.

Inspire is able to control the output in eight separate sections. This means that Inspire can conduct sectional control down to 1.5m sections. This is a unique precision feature in the large seed drill segment.







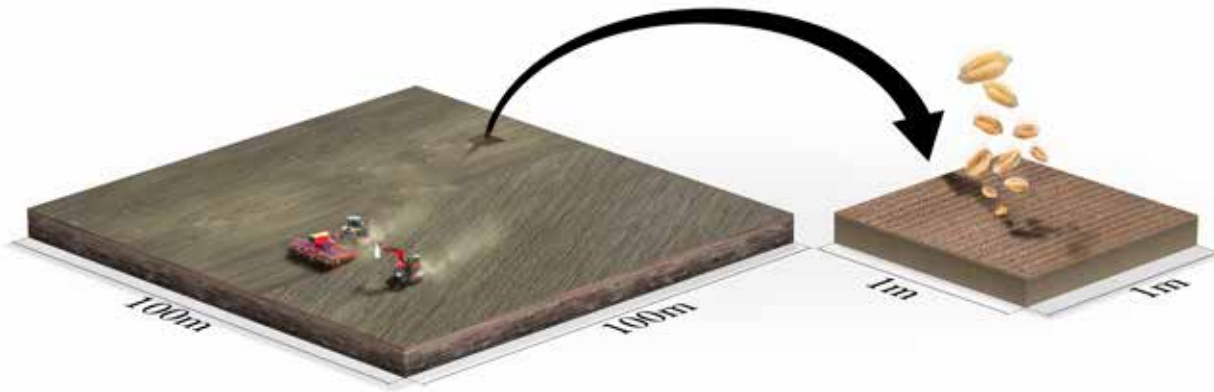


# SeedEye



## Precision and performance in focus

The unique Väderstad SeedEye sensors provide an insight with precision down to each individual square metre within the field. With access to exact data, you are able to make informed decisions for increased efficiency and maximised results in the crop production.



## Seeds per square metre instead of kilo per hectare

Using Väderstad SeedEye, the desired seed rate is set in terms of number of seeds per square metre. In the field, sensors accurately records the number of seeds passing through each individual seed tube. By combining this information with driving speed data from the seed drill ground radar, the output is automatically adjusted to maintain the selected seed rate.

## No calibration required. Maximised time in the field.

SeedEye automatically adjusts the seed rate on the move so there is no need for calibration. This increases the ease-of-use as well as maximising field efficiency. In the cab, you have full control of the seeding operation via the iPad based control system Väderstad E-Control.



*The complete SeedEye system with seed counting and blockage monitoring is available for Inspire 1200S, while Inspire 1200C is limited to only benefit from the blockage monitoring function of SeedEye.*

## SeedEye ensures great results

Increasing access to information is the cornerstone of smarter farming. Since SeedEye registers each individual seed and fertiliser passing through the tubes, the seeding is visualised in real time. If a deviation should occur, SeedEye gives an immediate warning so that any impact on the drilling can be quickly remedied.

## Take full control of the seeding

Väderstad SeedEye puts the control in your hands giving you the opportunity to fully optimise the result on the field.

By measuring seeds per square metre, instead of weight per hectare, the seeding result is no longer affected by variations in different seed bags or seed types. This increases precision and maximises seeding performance.

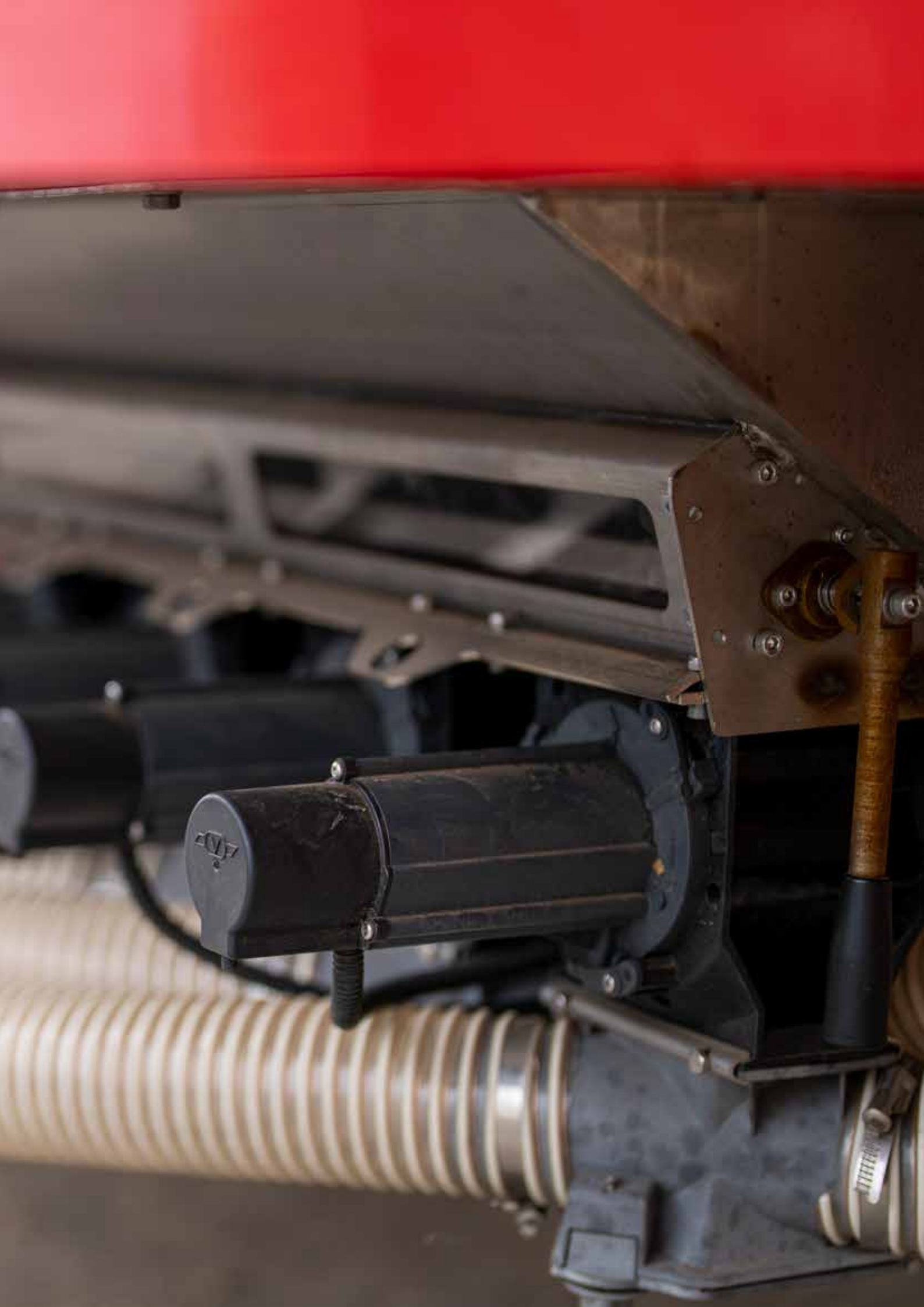
Working with ISOBUS Task Controller, a variable seed rate and sectional shut off is also possible.





# Quality metering, quality performance

The ability of the seed meter to deliver an exact rate at an even flow, lays the foundation for the establishment of the coming crop. The Fenix III excels in this area. Its precise, reliable and simple operation allows for a wide range of versatility to suit all types of seeding applications.





# Fenix III



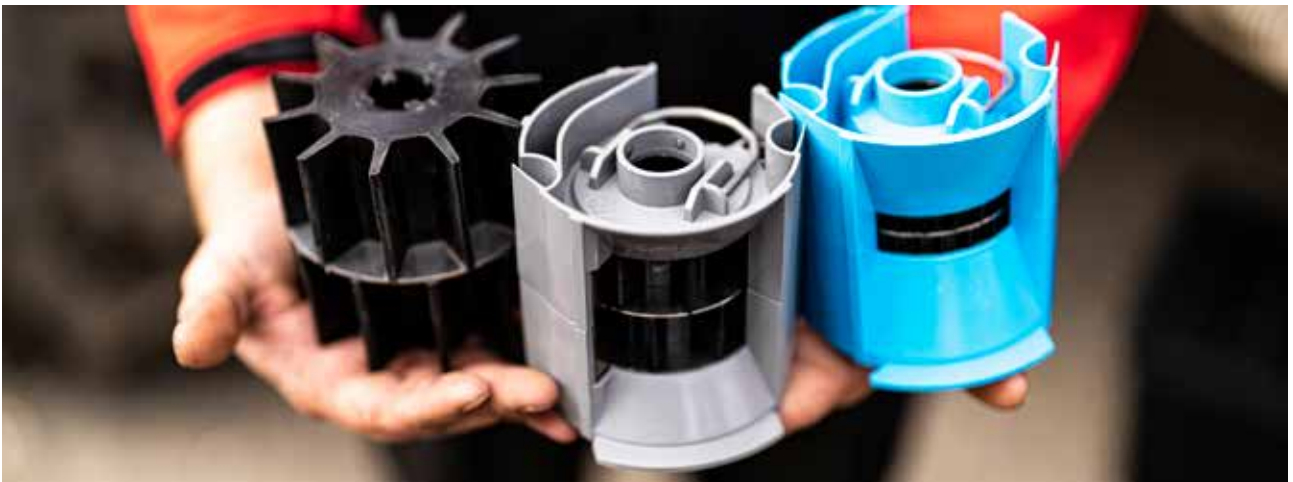
---

## Precision and performance

Farming's most advanced seed metering technology is engineered for exceptionally precise seeding, reliable performance and easy maintenance, year after year.

## Even product flow

Fenix III guarantees a consistent flow of all products. The OffSet rollers do not fill and empty across the entire width at the same time. Instead, they alternate feeding from one side of the roller to the other. Together with an angled design of the meter outlet, this ensures a smooth, constant product flow with minimized pulsing.



## Reliable metering

Fenix III has heavy-duty components to ensure a robust, durable meter able to withstand a wide variety of condition.

One important feature of Fenix III is the soft roller that seals the system and lowers the air requirement and fuel consumption. Having soft roller flutes prevents jamming and motor failure, thereby ensuring a reliable rate of delivery.

## Simple operation

The design of the Fenix III meter, where the roller is placed directly on the electric motor axle, makes it an easy-to-use system. With only a few moving parts and no grease zerks, maintenance is simple.

Changing rollers between crops is performed in a matter of seconds.



# Inspire 1200C/S

The 12 metre wide Inspire 1200C/S is designed for high performance with minimised downtime in the field. It is available as a seed-only or seed- and fertiliser model.

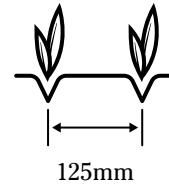
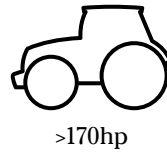
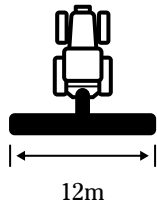


Inspire 1200C/S is equipped with a large hopper, with a low filling height and large opening. The seed-only version Inspire 1200S is equipped with a 5000-litre hopper for seeds. While the combi version Inspire 1200C has a 7200-litre hopper holding both seeds and fertiliser in two separate compartments. With a large platform and an open machine design, you benefit from good access to all components throughout the machine.

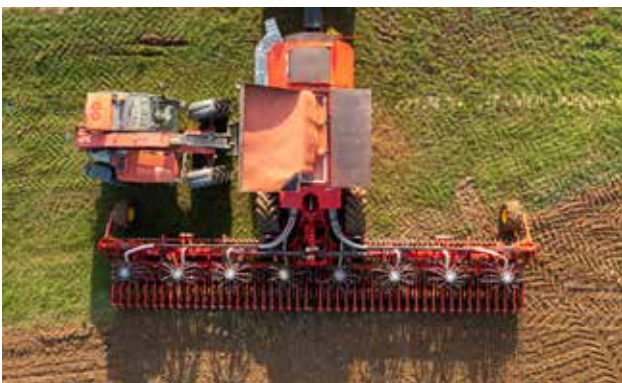
## **Perfect depth control**

Inspire 1200C/S is equipped with hydraulic wing pressure which transfers weight from the inner section of the machine to its outer wings. This enables Inspire 1200C/S to respond to any irregularities on the field and ensure an even emergence.





## Wide seeding precision



*The large hopper with a low filling height allows for an easy filling.*



*When folded, Inspire 1200C/S has a width of 3-metre, simplifying transportation.*









# Väderstad E-Control – New generation control system

The iPad-based control system Väderstad E-Control wirelessly connects to the Väderstad machine enabling full access to its functions and data. You benefit from user-friendly remote setup and calibration, as well as real-time monitoring and control.



## The portable office

Väderstad E-Control is a fully portable control system ready to be used when and where it is required. When calibrating the Väderstad machine, you can take the portable iPad out of the tractor and control the calibration from outside.

When your day is over you can take the iPad to the office and start planning the next day's work.





## State of the art graphics

The high-resolution iPad-display presents all the information clearly. The outstanding graphics makes every function easier to utilise.



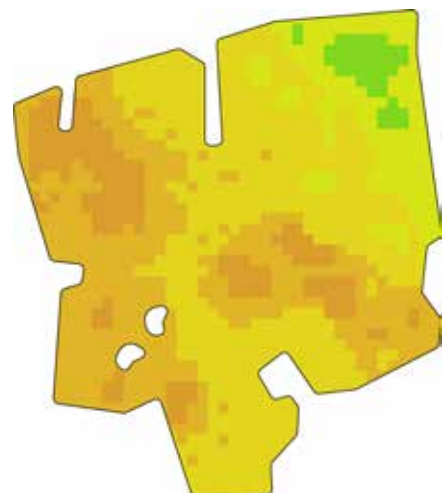
Since Väderstad E-Control is used for many planters and seed drills in the Väderstad range, the same iPad can be used for multiple machines on the farm.

## Always up to date

At Vaderstad we find it very important to provide the best support and service for all our customers. Therefore, all E-Control software updates are easy to download free of charge. With E-Control, you are always sure to benefit from the latest technology and the newest innovative solutions from Väderstad.

## Combined control with ISOBUS Task Controller

Using Väderstad E-Control together with an ISOBUS terminal allows for automatic GPS section control and variable seed rate. A list of terminals compatible with ISOBUS Task Controller can be found on our web page [vaderstad.com](http://vaderstad.com) by searching for ISOBUS.



# Accessories



## Drawbar and towing eye

The following options are available: towing eye 40/50mm, Ball coupling 80mm, Ball towing eye 51/71mm.



## Track eradicators

Loosens the soil in the tractor wheel tracks.



## CrossBoard

The CrossBoard levels the field and crushes clods, to improve the seedbed.



## Following harrow

The following harrow finishes the seedbed, sorting the larger aggregates on top and fine tilth in the seedbed.



## Work lights

Improves the conditions for working at night.



	<b>Inspire 1200S</b>	<b>Inspire 1200C</b>
Working width (m)	12.0	12.0
Transport width (m)	3.0 (3.5)	3.0 (3.5)
Transport height (m)	4.0	4.0
Transport length (m)	7.9	8.8
Basic weight (empty hopper) (kg)	12000	13000
Hopper capacity (l)	5000	7200 (2200/5000)
Filling height (m)	2.05	2.05
Number of seed (fertiliser coulters)	96	96
Row spacing, seed (mm)	125	125
Total capacity (kg/ha at 15km/h)	300	500 (Seed and fertiliser)
Coulter pressure (kg)	40-80	40-80
Wheel dimension	600/65R34 (850/65R30.5)	600/65R34 (850/65R30.5)
Hydraulic requirements	4 DA + 1"FR + Power Beyond	4 DA + 1"FR + Power Beyond
Oil flow requirement (l/min)	140	180
Draught requirement (hp)	200-250	240-280

DA= Double acting FR= Free return

# Reliable and durable farm machinery



*2-year warranty on  
Väderstad seed drills,  
planters and tillage  
equipment.*



*Lifetime manufacturing  
warranty on all genuine  
Väderstad discs.*



Where farming starts